

Windows XP Setup

Infoway Connection Instructions 12/2001

The following are the basic steps for setting up your computer for a PPP connection to the library's Infoway Internet service. A PPP connection only gives you the ability to connect to the Internet, using Infoway's dial-up lines for access. This connection does NOT provide a Web browser or an email reader, only the connection that allows the Web browser or email reader to function over the Internet.

In addition to a PPP connection, your computer needs to have a Web browser, such as Netscape or Internet Explorer. The Web browser is the program that allows you to use the Internet, once you have successfully connected using the PPP connection.

What You Need to Get Started

Obtain an Infoway account, available from the Reference Desk at Farmington Public Library. An Infoway account is free, and gives you one hour of Internet access each day.

Step 1 – Access the “New Connection Wizard”

Click once on each of the following:

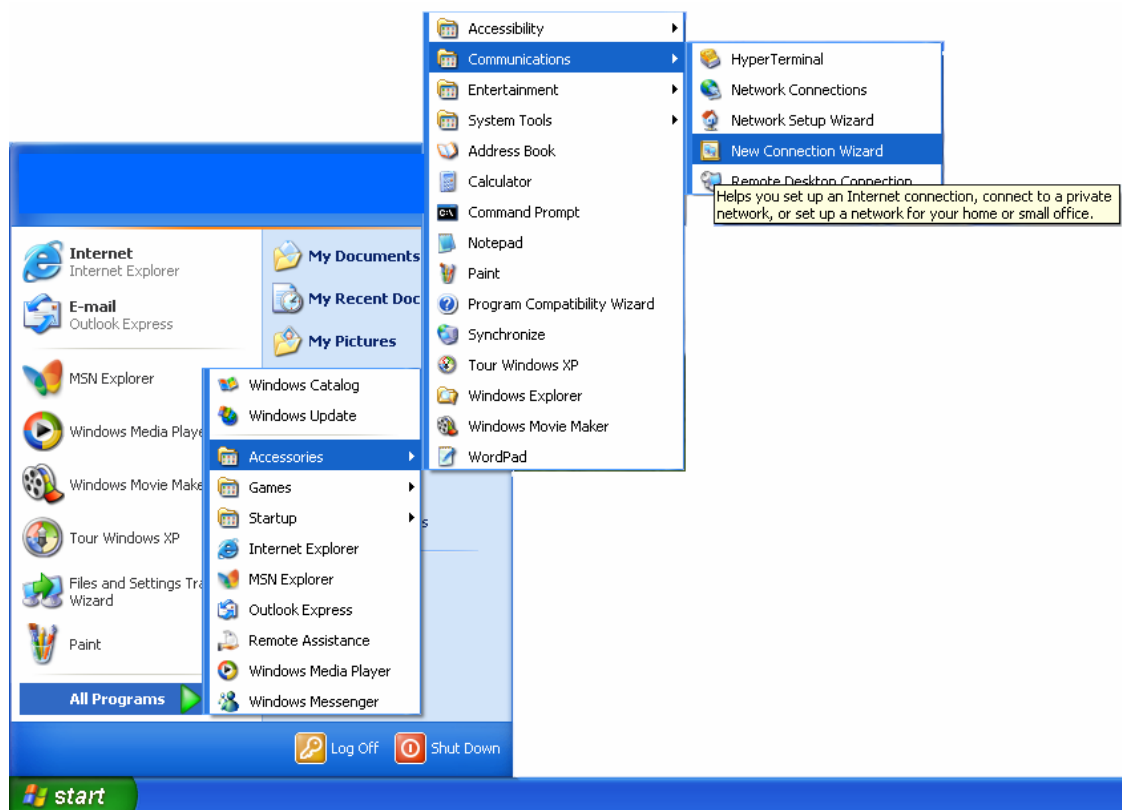
Start (button in lower left corner of computer screen display)

All Programs (pop-up menu choice)

Accessories (pop-up menu choice)

Communications (pop-up menu choice)

New Connection Wizard (pop-up menu choice)

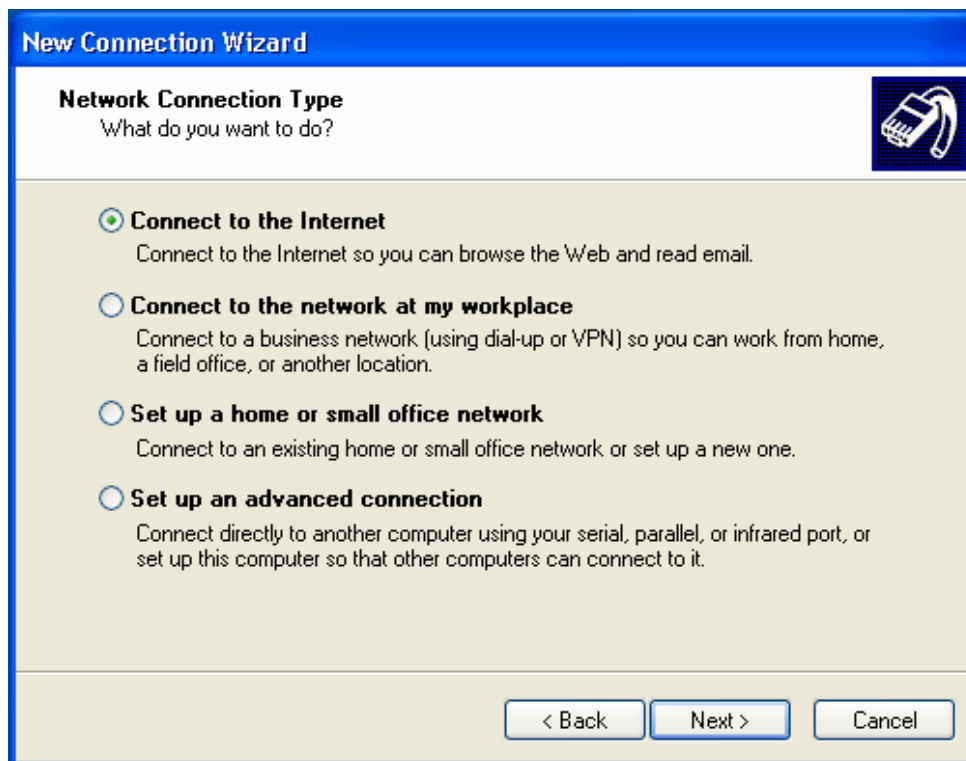


Step 2 – Use “New Connection Wizard” to Setup Infoway Connection

- A. After reading this welcome screen, click **Next**

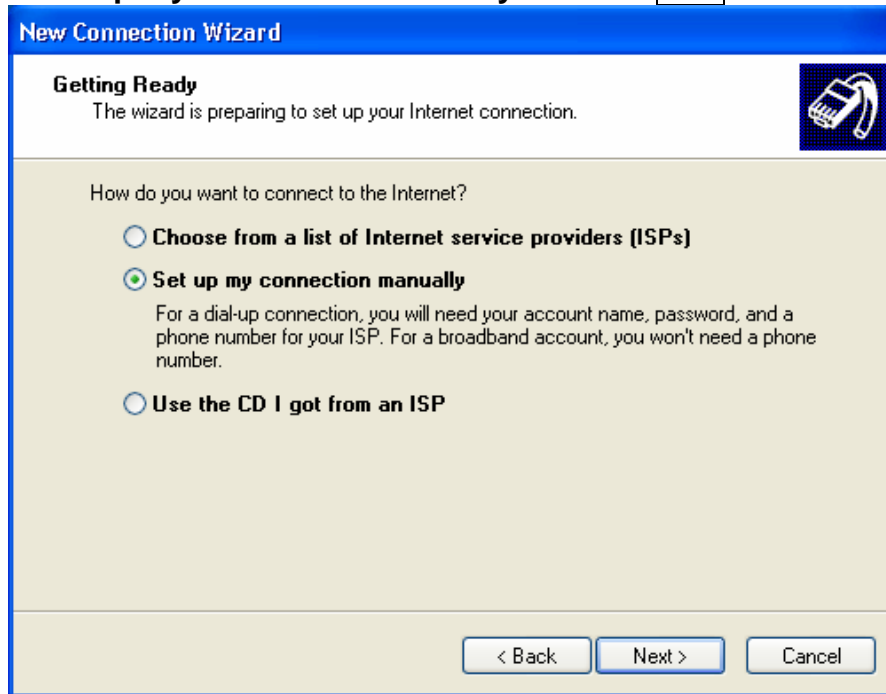


- B. Network Connection Type:
Select **Connect to the Internet** then click **Next**



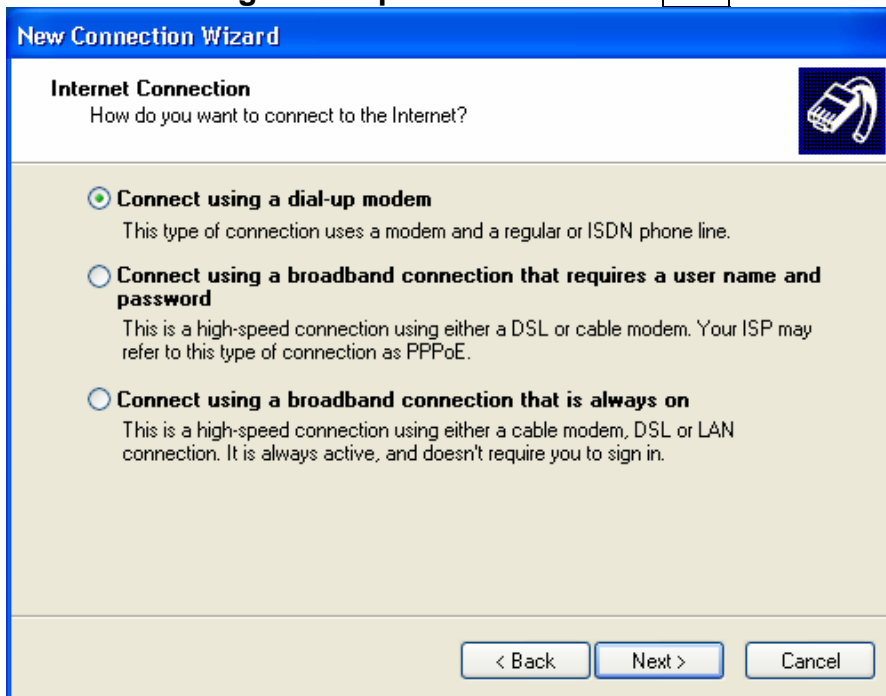
C. Getting Ready:

Select **Set up my connection manually** then click **Next**



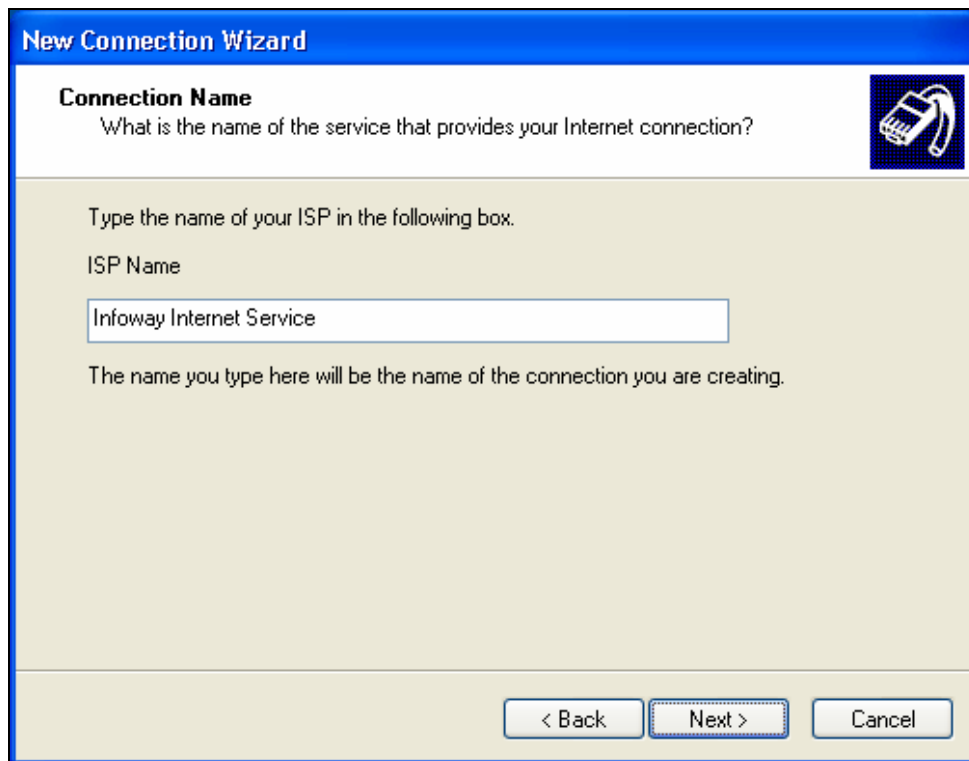
D. Internet Connection:

Select **Connect using a dial-up modem** then click **Next**



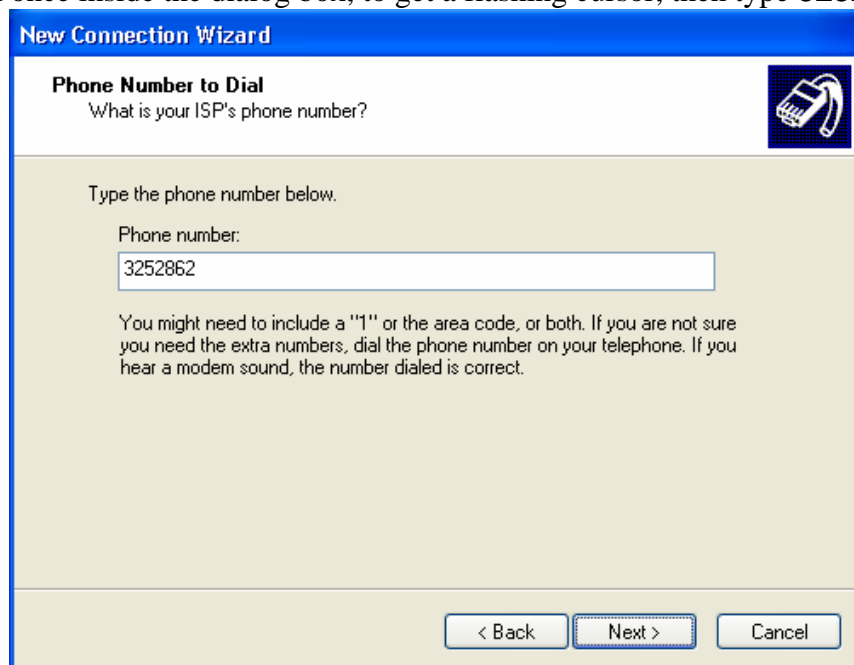
E. Connection Name:

Click once inside the dialog box, to get a flashing cursor, then type **Infoway Internet Service**. Click **Next**



G. Phone Number to Dial:

Click once inside the dialog box, to get a flashing cursor, then type **3252862**. Click **Next**



H. Internet Account Information:

Click once inside the “User name” dialog box, to get a flashing cursor, then type **Your User name**, EXACTLY as written on your account application card.

Click once inside the “Password” dialog box, to get a flashing cursor, then type **Your Password**, EXACTLY as written on your account application card. (Your screen will only show dots where you type.)

Click once inside the “Confirm password” dialog box, to get a flashing cursor, then type **Your Password** a second time, EXACTLY as written on your account application card. (Your screen will only show dots where you type.)

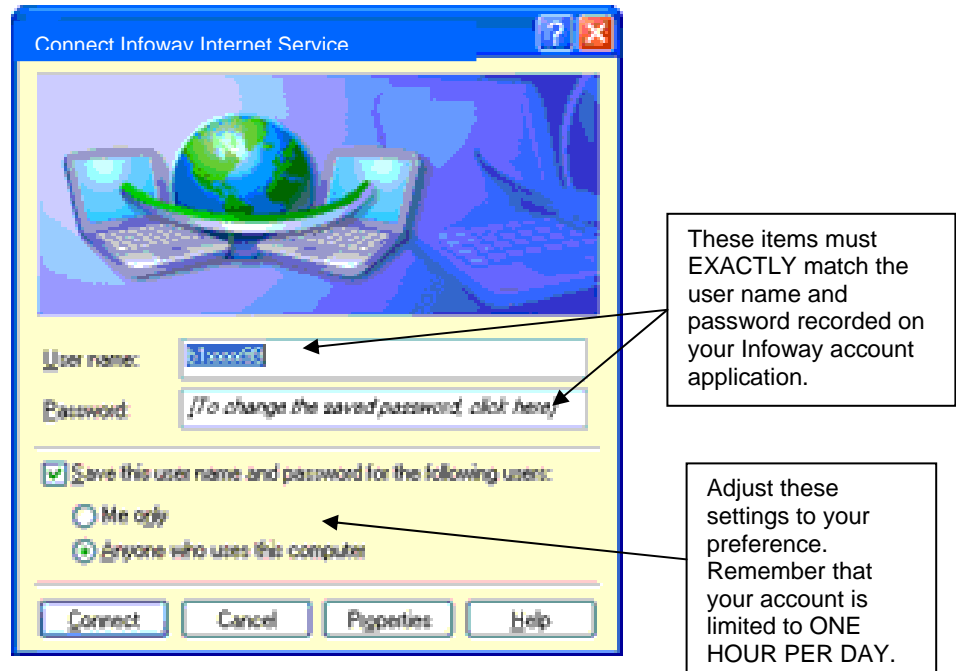
Click **Next**

I. Completing the New Connection Wizard:

Click **Finish**

Step 3 – Getting Connected (Dialing in) to Infoway

Find the shortcut icon (on your desktop) labeled Infoway Internet Connection. Double-click on this icon to open the “Connect to” window.



Click on the button **Connect**

If all settings are correct, after 20 to 30 seconds you should see a message saying you are connected. (While you are connected you will see two small computers in the lower left corner of your screen, with an occasional flicker of blue between them.)

In order to use the Internet you must launch an Internet application, such as Internet Explorer or Netscape.