

# Windows ME (Millennium Edition)

## Infoway Connection Instructions 2/27/2001

The following are the basic steps for setting up your computer for a PPP connection to the library's Infoway Internet service. A PPP connection only gives you the ability to connect to the Internet, using Infoway's dial-up lines for access. This connection does NOT provide a Web browser or an email reader, only the connection that allows the Web browser or email reader to function over the Internet.

In addition to a PPP connection, your computer needs to have a Web browser, such as Netscape or Internet Explorer. The Web browser is the program that allows you to use the Internet, once you have successfully connected using the PPP connection.

---

### What You Need to Get Started

Obtain an Infoway account, available from the Reference Desk at Farmington Public Library. An Infoway account is free, and gives you one hour of Internet access each day.

---

### Step 1 - Configure TCP/IP Protocol

Select the following (point with your mouse and click the left mouse button):

Start (button in lower left corner of computer screen display)

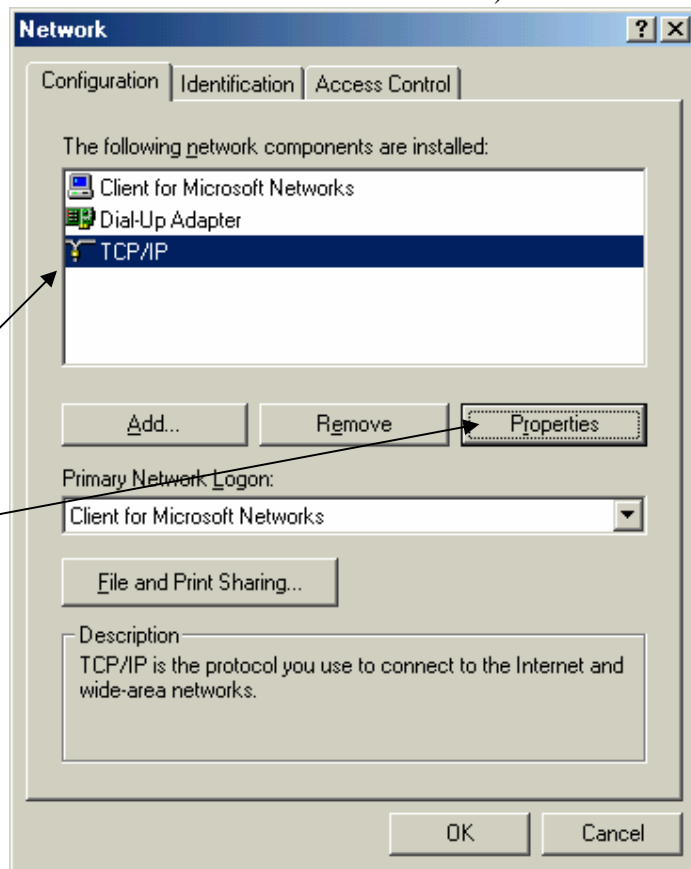
Settings (pop-up menu choice)

Control Panel (pop-up menu choice)

Network (pop-up menu choice – or an icon in the Control Panel window)

Highlight TCP/IP (click on it to highlight it)

Select Properties (click on the button)



Select Enable DNS (click inside the radio button, so the black dot appears)

Host name:  
*anyname*  
(a “name” for your computer)

Domain name:  
infoway.lib.nm.us

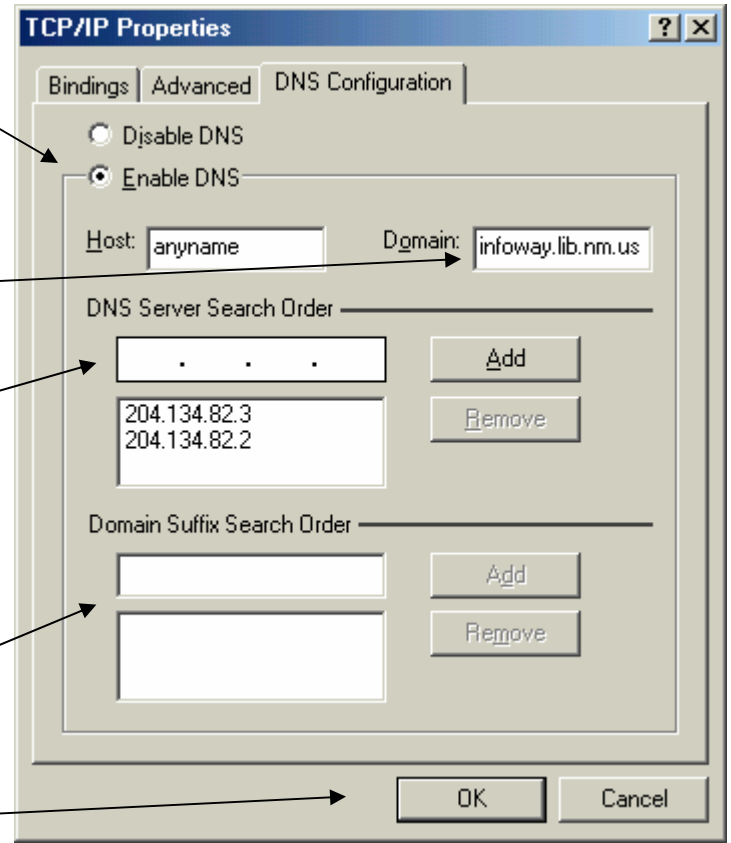
DNS Server Search Order:  
Type each number inside this top box, then click Add.

198.243.13.3

198.243.13.2

(After clicking “Add” the number will appear in box below.)

Leave the Doman Suffix Search Order empty – if some are already entered there, remove them.

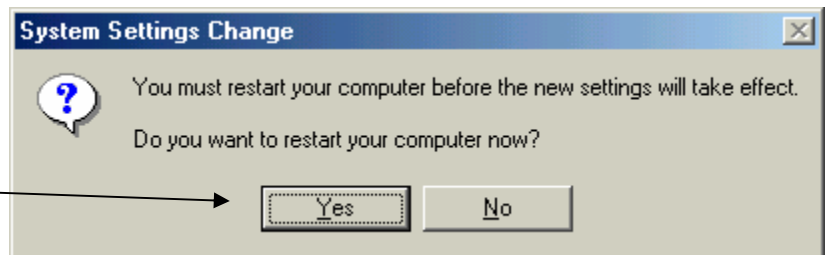


Click OK

The “Network” dialog box is still displayed. Click OK

You will be asked if you wish to restart your computer.

Click YES



## Step 2 - Set up the Connection Icon

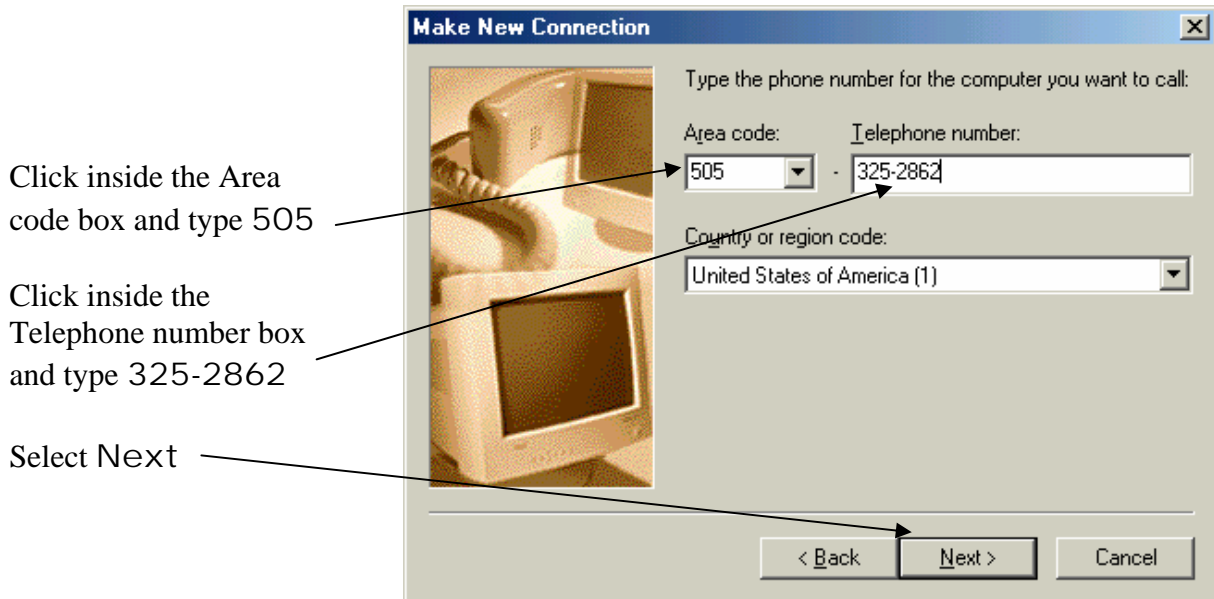
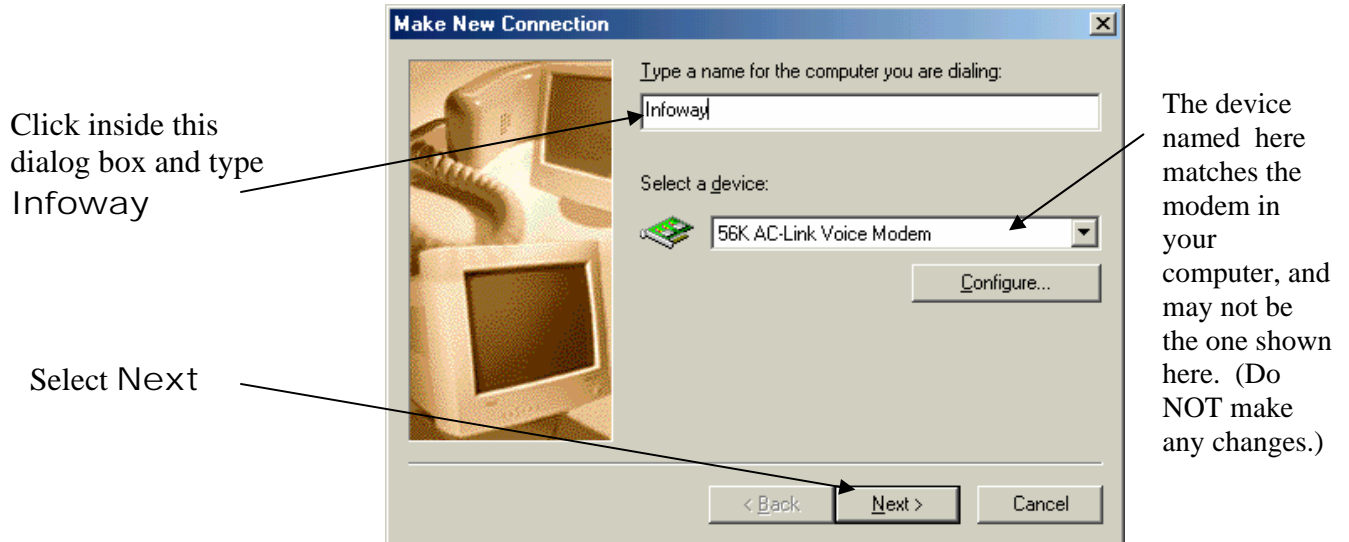
Select the following (point with your mouse and click the left mouse button):

Start (button in lower left corner of computer screen display)

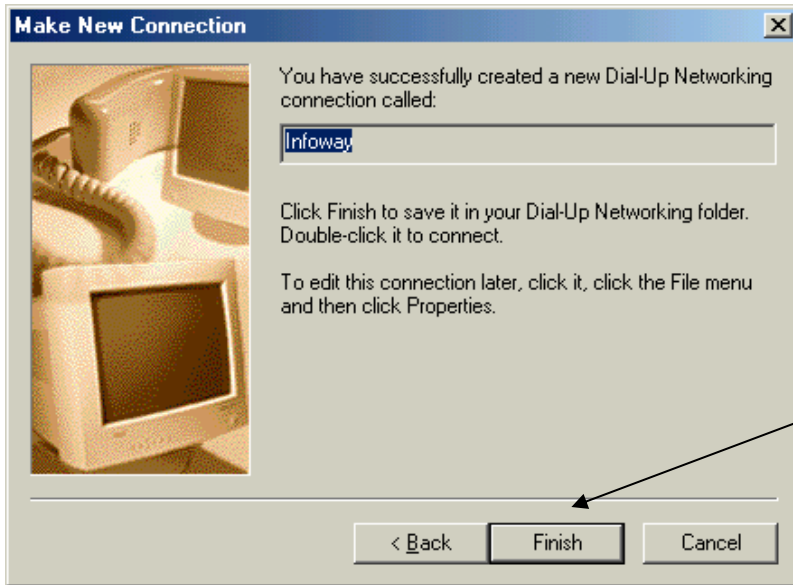
Settings (pop-up menu choice)

Dial-up Networking (pop-up menu choice)

Make New Connection (icon in the Dial-up Networking window)



The following Window will be displayed:



Select Finish

The Dial-up Networking window will now show a new icon, labeled Infoway. (If you have other Internet providers, each Internet provider will have its own icon in this window.)



Optional – Create a “shortcut icon” for Infoway on your desktop:

Right-click on the Infoway icon and select “create shortcut” from the pop-up menu. You will see a message, “Windows cannot create a shortcut here. Do you want the shortcut to be placed on the desktop instead?” Select Yes.

## Step 3 - Getting Connected (Dialing in) to Infoway

Select the following (point with your mouse and click the left mouse button):

Start (button in lower left corner of computer screen display)

Settings (pop-up menu choice )

Dial-up Networking (pop-up menu choice)



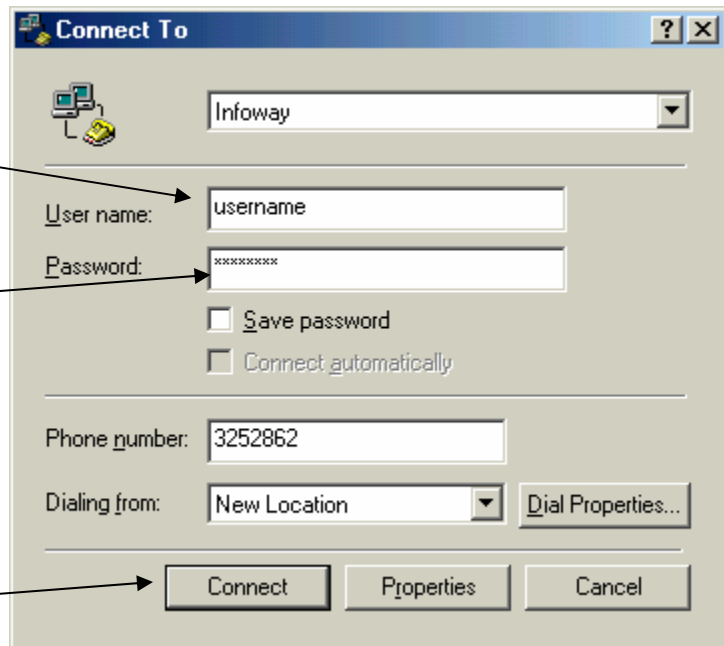
Double-click on the Infoway icon, to open the "Connect to" window, shown below

Click inside this dialog box and type your Infoway username

Click inside this dialog box and type your Infoway password

**Note:** Your username and password MUST be typed EXACTLY as they appear on your Infoway account record.

Select the button Connect



If all settings are correct, after 20 to 30 seconds you should see a message saying you are connected.

You are now connected, but in order to use the Internet you must launch an Internet application, such as Internet Explorer or Netscape.